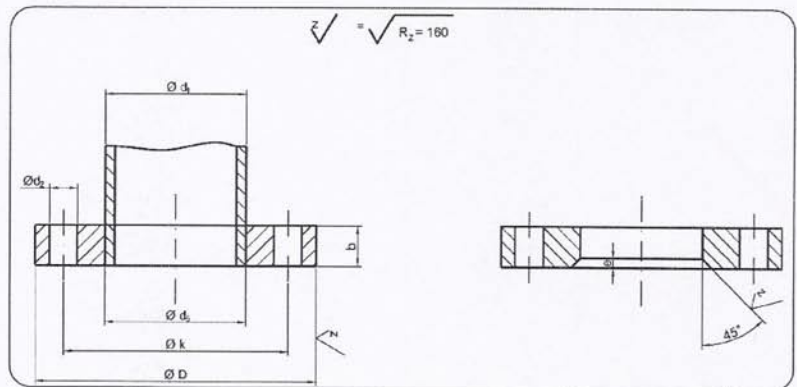




Brida Lisa para Soldar DIN 2576.

Presión Nominal 10.



Paso Nominal	Medidas de Acoplamiento del Tubo		Dimensiones de Brida					Taladros			Peso por Brida Kg. »
	d_1		d_s	D	b	e	k	Número	Rosca	d_2	
Serie 1	Serie 2										
10	- 17.2	14.0 -	14.5 17.7	90	14	5	60	4	M 10	14	0.61 0.61
15	- 21.3	20.0 -	21.0 22.0	95	14	5	65	4	M 12	14	0.67 0.67
20	- 26.9	25.0 -	26.0 27.6	105	16	5	75	4	M 12	14	0.75 0.94
25	- 33.7	30.0 -	31.0 34.4	115	16	5	85	4	M 12	14	1.14 1.11
32	- 42.4	38.0 -	39.0 43.1	140	16	5	100	4	M 16	18	1.66 1.62
40	- 48.3	44.5 -	45.5 49.0	150	16	5	110	4	M 16	18	1.89 1.86
50	- 60.3	57.0 -	58.1 61.1	165	18	6	125	4	M 16	18	2.51 2.47
65	76.1	-	77.1	185	18	6	145	4	M 16	18	3.00
80	88.9	-	90.3	200	20	7	160	8	M 16	18	3.79
100	- 114.3	108.0 -	109.6 115.9	220	20	7	180	8	M 16	18	4.20 4.03
125	- 139.7	133.0 -	134.8 141.6	250	22	7	210	8	M 16	18	5.71 5.46
150	- 168.3	159.0 -	161.1 170.5	285	22	7	240	8	M 20	22	6.72 6.57
(175)	193.7	-	196.1	315	24	7	270	8	M 20	22	8.45
200	219.1	-	221.8	340	24	7	295	8	M 20	22	9.31
250	- 273.0	267.0 -	270.2 276.2	395	26	7	350	12	M 20	22	12.50 11.90
300	323.9	-	327.6	445	26	7	400	12	M 20	22	13.80
350	355.6 -	- 368.0	359.7 372.2	505	28	7	460	16	M 20	22"	20.60 19.00
400	406.4 -	- 419.0	411.0 423.7	565	32	7	515	16	M 24	26	27.90 25.90
(450)	457.0	-	462.3	615	38	7	565	20	M 24	26	35.60
500	508.0	-	513.6	670	38	7	620	20	M 24	26	41.10